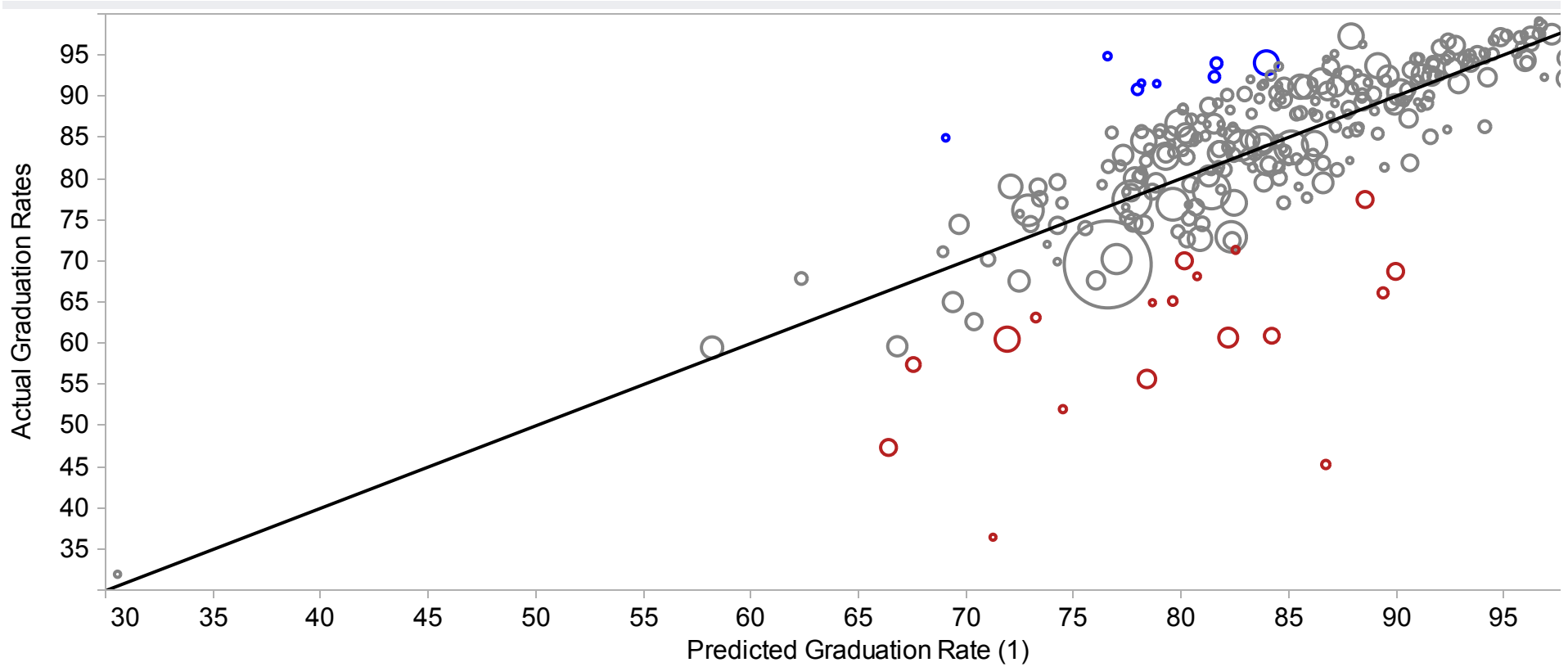


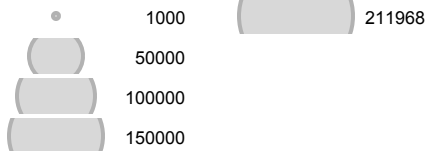
California School Districts: Actual vs. Predicted Graduation Rates 2008-2009



1. See Methodology
2. Display restricted to districts with 9th -12th grade enrollment above 1000 ($n = 277$)
Source: California Department of Education <<http://www.cde.ca.gov/>>

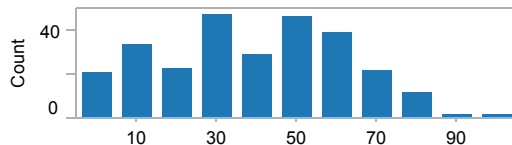


9th-12th Grade Enrollment (2)



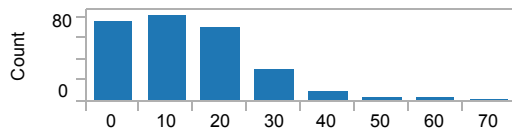
Filters

Use filters to view the distributions of districts with varying % of students on free and reduced lunch and classified ELL



% Students on Free and Reduced Lunch

1 to 100



% Students Classified as ELL

0 to 79

Residual

The residual represents the difference between the actual graduation rate and the predicted graduation rate

- 10 or more points below
- 10 or more points above
- Within 10 points above/below

100